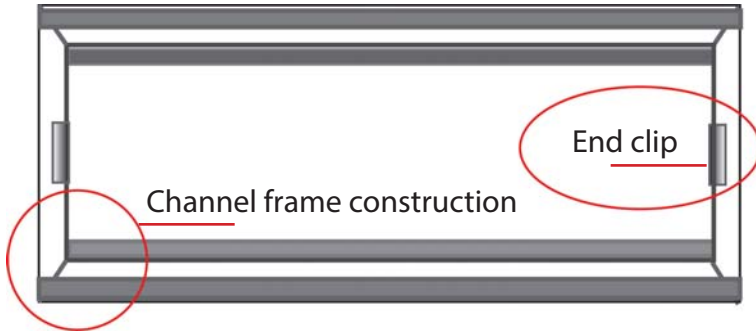


the accordion

PAINT BAFFLE

INSTALLATION INSTRUCTIONS

Cross-draft exhaust frame opening



Measure baffle length

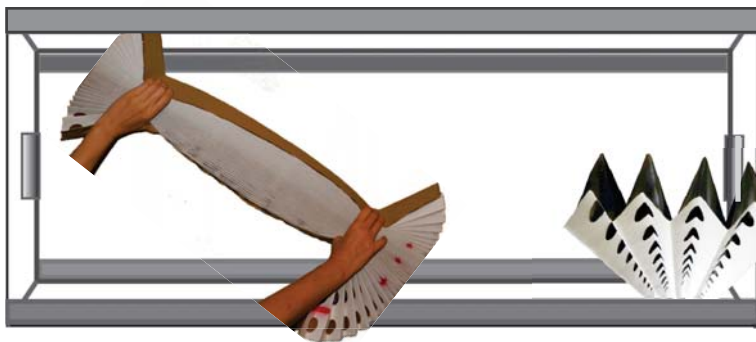
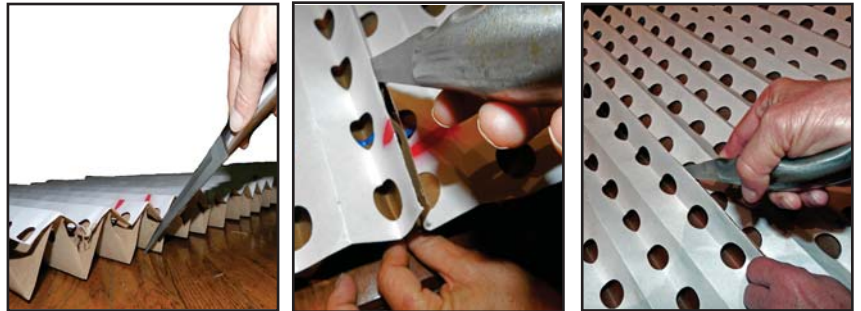
- Measure length of exhaust frame opening.
- Count a red mark for each foot (or meter) and cut baffle to length.



Cut baffle to length

Tip: point tip of knife to table or floor.

- Slide knife under the pleat.
- Pinch pleats on either side of knife blade to start cut.
- Pinch top pleat to guide knife.



Insert baffle in frame

- Gather baffle and insert in frame.
- Tilt baffle to insert behind front "lip" of frame and release.
- Tuck end pleats behind end clips.

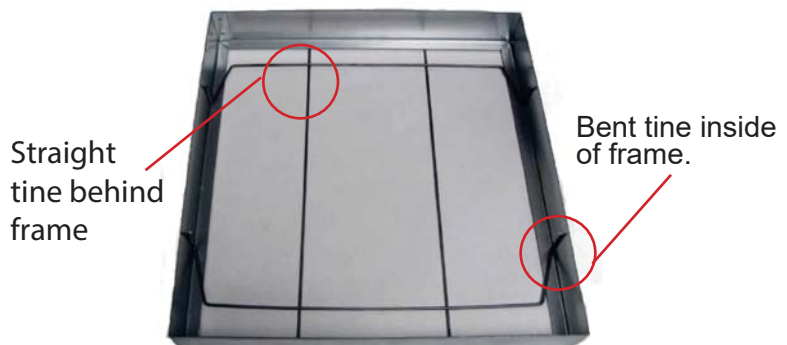
*Optimal extension: 8 pleats per foot (26 pleats per meter).

How to install baffle supports

Baffle supports are required for multi-cell frames (pads).

- Flex bent tines of support inward to create an 1/8" gap between the frame and the support. This creates space for the end pleat.
- Tilt support to hook top tines behind the frame.
- Slide support up to fit bottom tines behind the frame. (Bent tines will be in front of the frame.)
- Slide support to center in frame opening.

Example of a single exhaust cell frame opening



Supports can be turned either direction in the cell. Pleats can be run vertically or horizontally in pad sizes.